

*resorts with a new attitude*

blue & green

A stylized white graphic of a plant stem with two leaves, positioned to the right of the text. The stem is a single continuous line that curves upwards and then downwards, ending in two pointed leaves.

blue & green

*Troia*

DESIGN HOTEL





blue & green  
*Troia*  
DESIGN HOTEL



## Tróia

Less than one hour away from Lisbon, Tróia is a peninsula surrounded by **three natural parks** with the sea, beach and mountains enhanced in perfect combination.

Featuring **vast sandy shores** and **transparent sea**, it enjoys the tranquility of a haven safeguarded from the pressure of tourism.

With the marina, the casino, golf courses and plenty of restaurants to choose from, this sustainable tourism destination offers leisure activities for everyone.





Tróia Design Hotel is a contemporary 5 star resort less than one hour away from Lisbon.

Located in the heart of a nature reserve and features dazzling views over the marina, the Atlantic Ocean, Rio Sado and Serra da Arrábida. Capacity up to 250 rooms with a diversity of categories: Deluxe Rooms and Studios, Premium Suites, Master and Grand Suites.

# Deluxe Room



# Deluxe Studio



Master Suite  
Living Room





# Master Suite Bed Room





## Grand Suite Living Room



b&g  
RESTAURANT  
*by blue&green*

A restaurant with a contemporary design and a magnificent view of the marina, offering a menu based on delicious Portuguese cuisine, inspired by regional flavors.



blue&green  
*Tróia*  
DESIGN HOTEL



# salinas brasserie

A space that extends outside into an ample esplanade where the sunshine can be enjoyed, made distinct by its Atlantic-based gastronomy with many sea flavors.





# PAPRIKA POOL BAR

Offers delicious snacks, salads and natural juices for the hottest days of the year and has a magnificent view of Serra da Arrábida.

Open only during part of the year (seasonal), or for special events off season





# [B.A.R.]

By the reception, ideal for a drink or to have a coffee while reading the news of the day.



A wide range of treatments performed by qualified therapists using minimalist luxury equipment, defined by its functionality and design, in a 1200 m2 space with 14 rooms, named "Best Luxury Spa Hotel" by the World Luxury Spa Awards



## Leisure

Sports, gastronomy, culture and so many other activities, in the river, the sea, the beach or the mountains.



Dolphins boat tour



Jeep Safari Sado



Sailing Boat



Peddy - paper





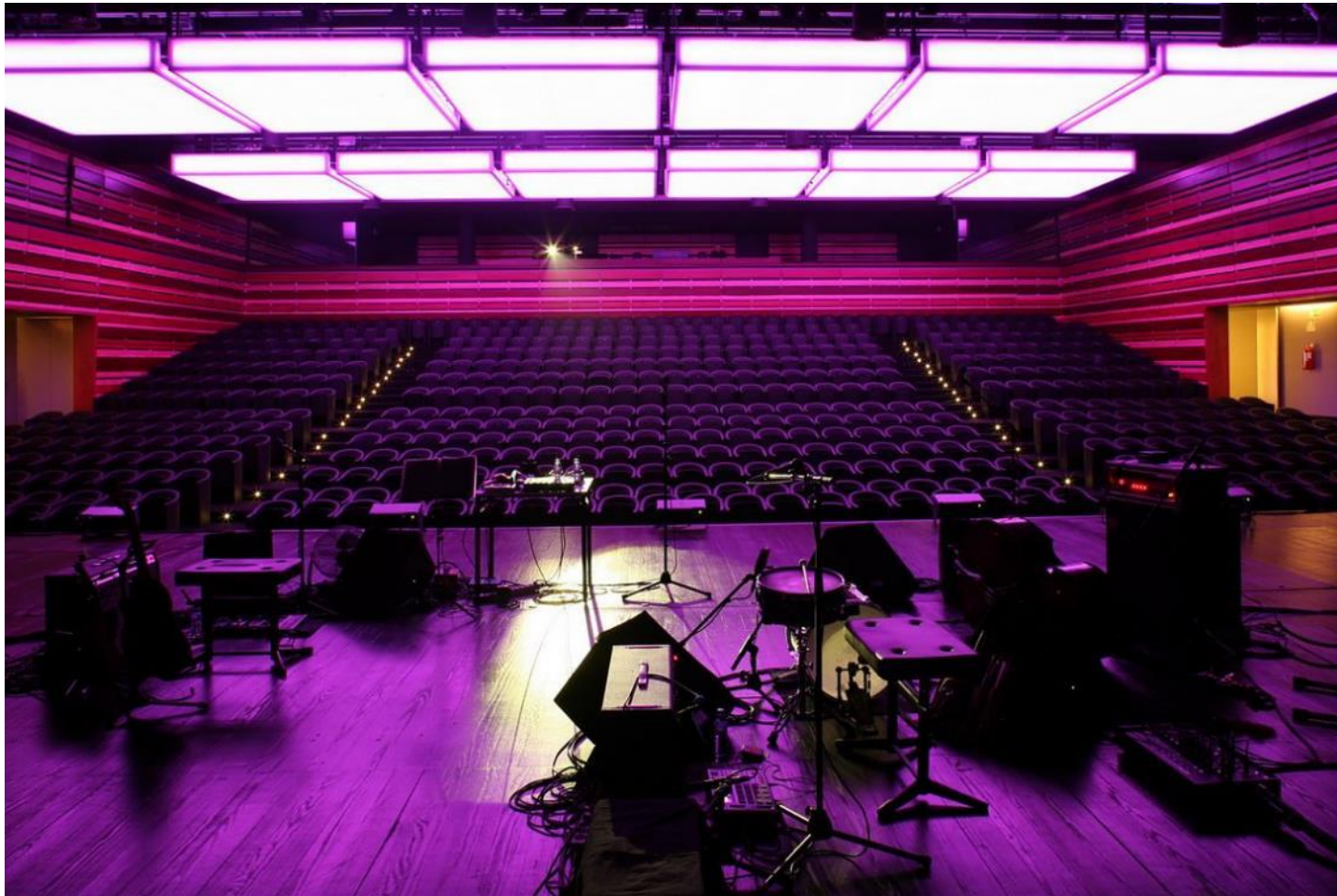
# CASINO TRÓIA

Tróia Casino is distinct in its contemporary architecture and modern interior design.

The Stratosphere Bar is both a bar and a stage where multimedia animation is provided by DJ's and VJ's or live musicians.

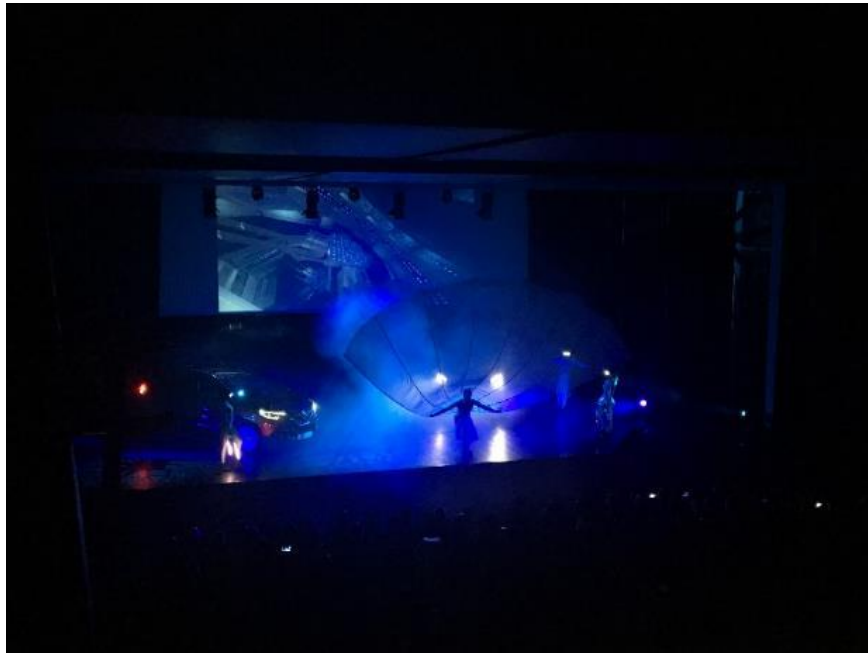
A VIP private room with view to the Casino for all type of corporate dinners up to 120 person`s.

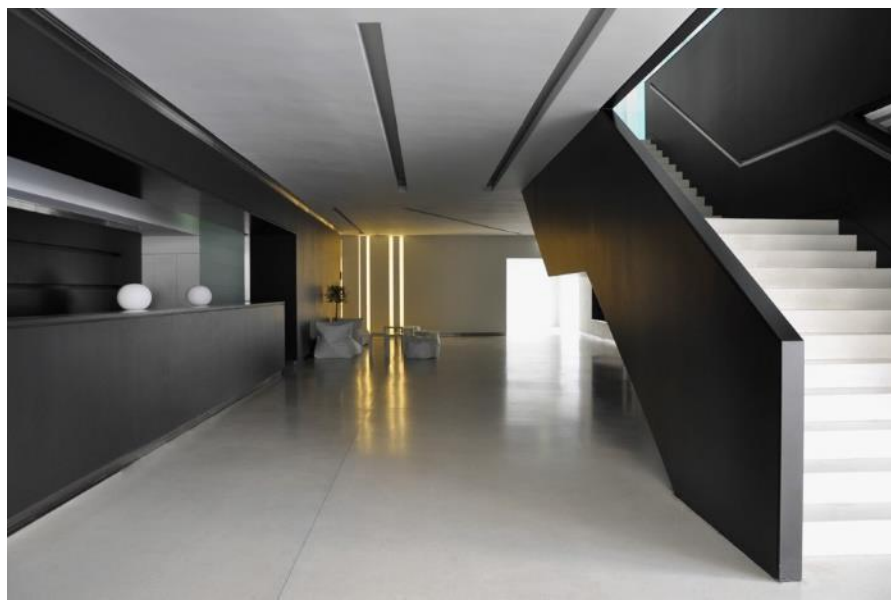


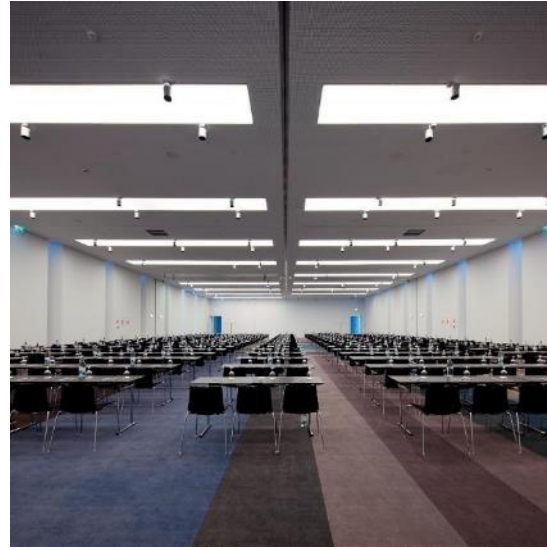


# CENTRO DE ESPECTÁCULOS SHOW CENTER

Designed by architects with significant expertise in sound, light and the performing arts, Tróia Casino Show Center is equipped with the latest and most sophisticated technologies to host all kinds of events, functioning as an auditorium and show room or as a dining hall.



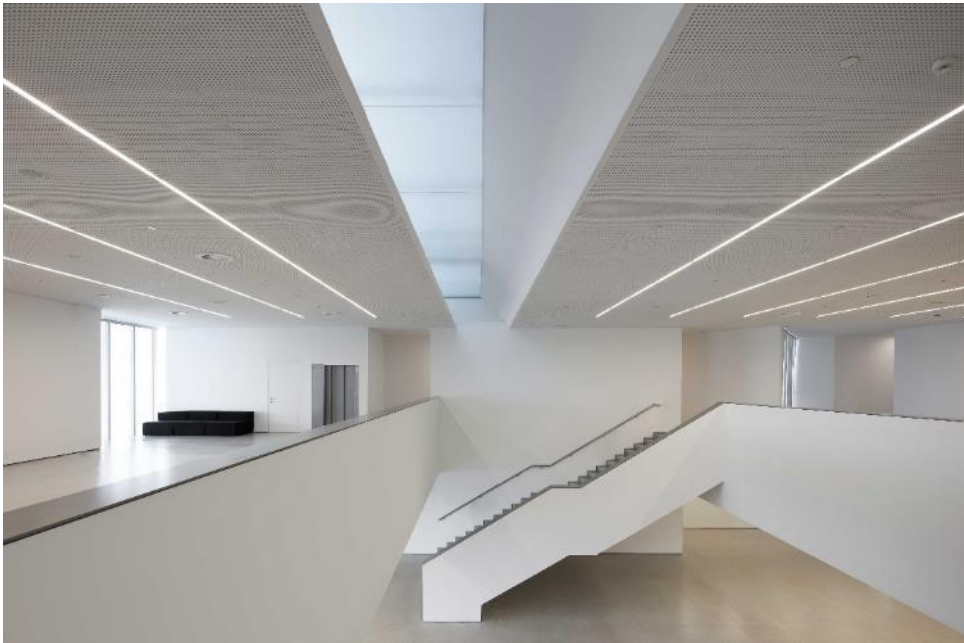


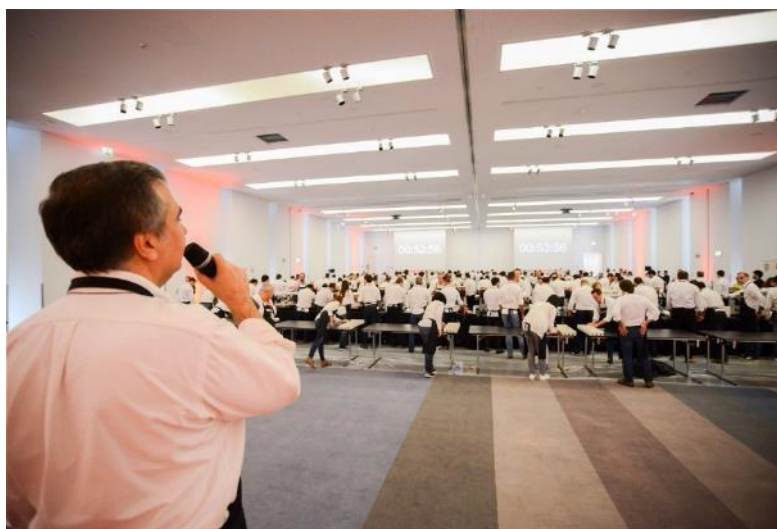
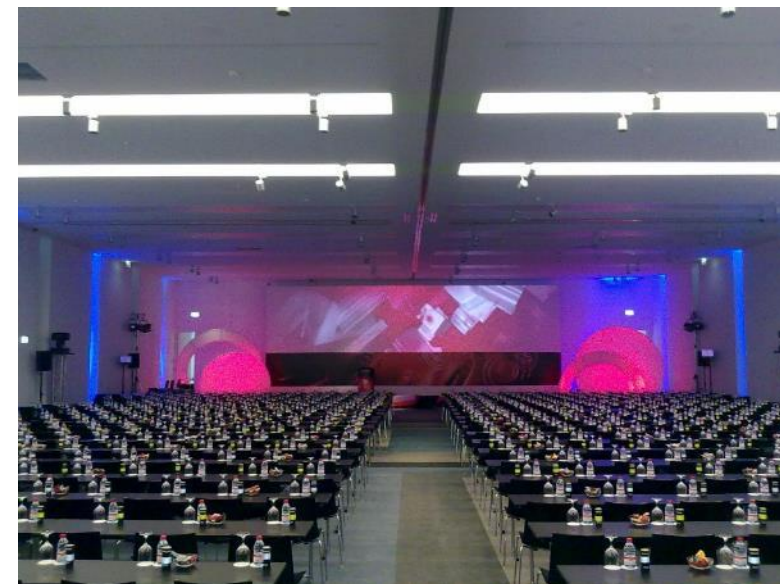
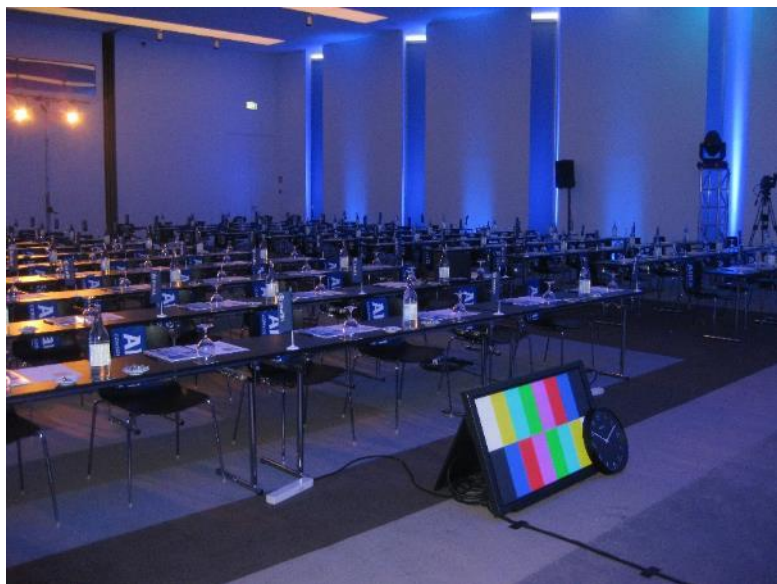


# CENTRO DE CONFERÊNCIAS

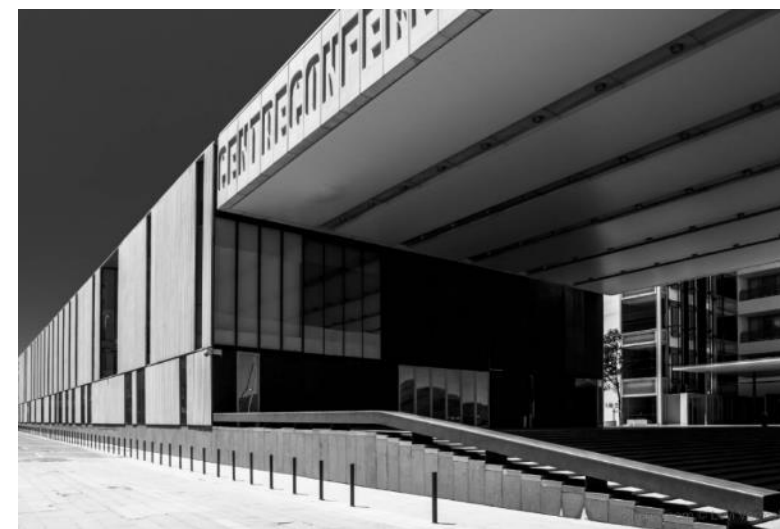
A spacious and versatile Conference Center with natural daylight.

Technologically advanced, with capacity for up to 850 people (divisible into 4 rooms), 14 meeting and breakout rooms up to 40 people and custom-made catering.

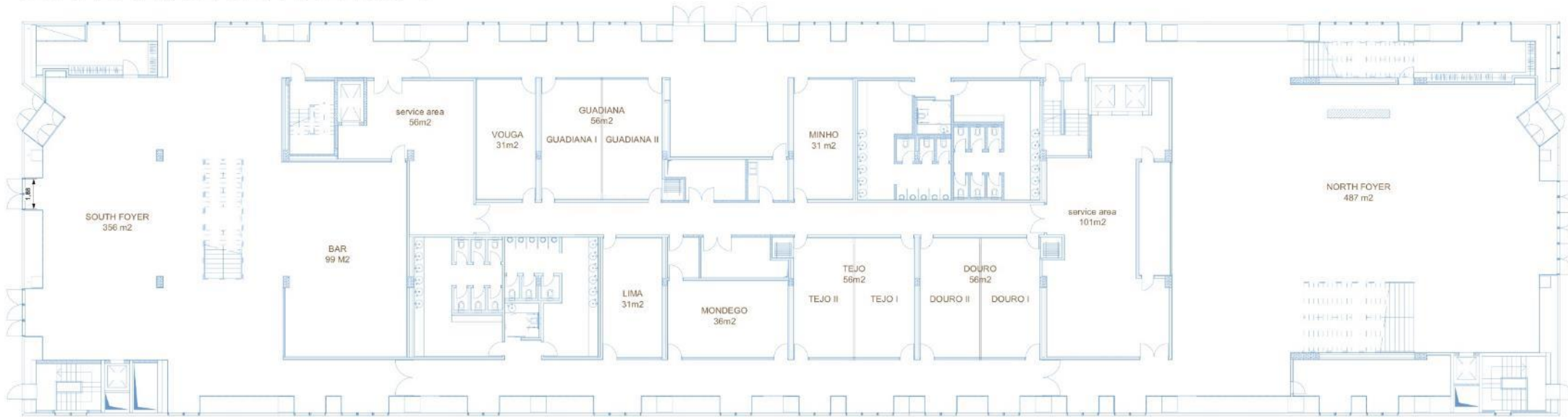




# CENTRO DE CONFERÊNCIAS



## CONFERENCE CENTER floor 0



## CONFERENCE CENTER 1st floor





blue & green

*Troia*

DESIGN HOTEL



*resorts with a new attitude*

blue & green

A stylized white graphic of a plant stem with two leaves, positioned to the right of the text. The stem is a single continuous line that curves upwards and then downwards, ending in two pointed leaves. The leaves are also formed by single continuous lines, with one leaf being larger than the other.